



*Gary Treanor  
Product Development Manager  
Kingspan Offsite  
Monaghan, Ireland*

## **Residential Construction in the UK & Ireland: Challenges & Achievements**

**Wohnbau in Grossbritannien und  
Irland: Herausforderungen und  
Erfolge**

**Edilizia residenziale in Gran Bretagna  
e Irlanda: sfida e successi**

**Document in English**



# Residential Construction in the UK & Ireland: Challenges & Achievements

Where as Timber Frame construction has been present in the UK & Ireland for over 40 years it is only recently that it has overcome traditional attitudes and become recognised as a main stream construction method within the residential sector.

Increased moves towards solutions offering higher degrees of offsite manufacture, together with a desire for sustainable design indicate a positive future for Timber Frame Construction.

This paper aims to outline the factors which have contributed to the growth of residential Timber Frame Construction and consider the future challenges to the industry, under the following headings:

- **System Build Supply Chain**

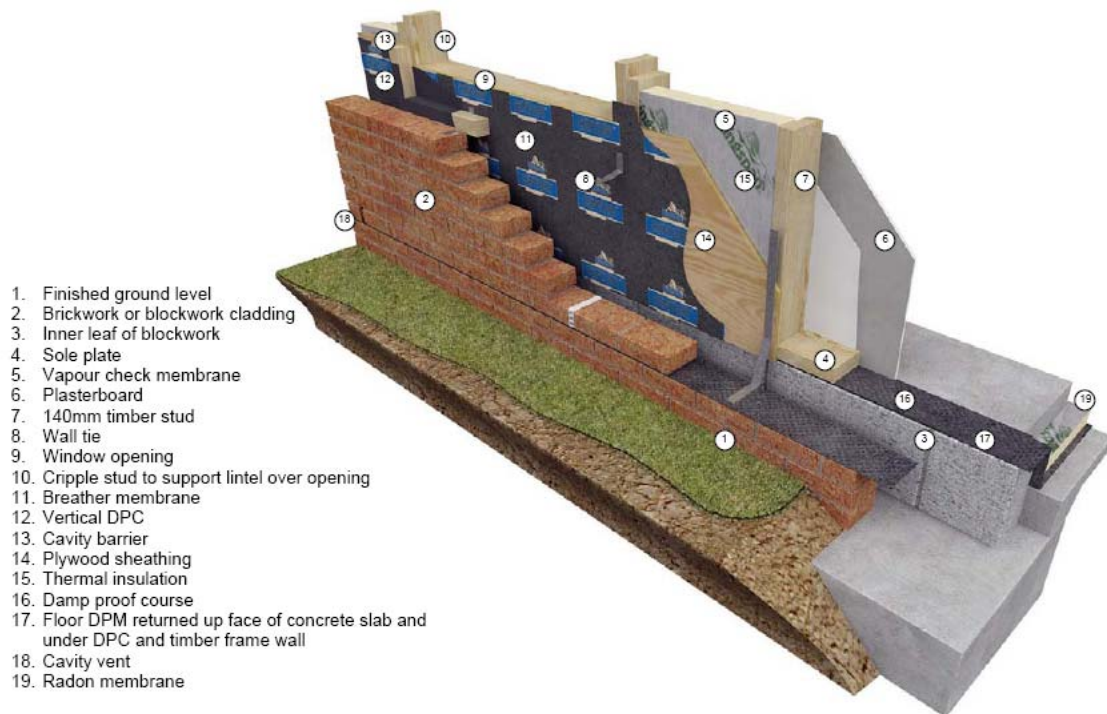


- **Materials**



## • Timber Framing Systems & their components

- Walls
- Floors
- Roofs
- External Cladding



## • Manufacturing Methods



Image 1: Manufacturing Methods

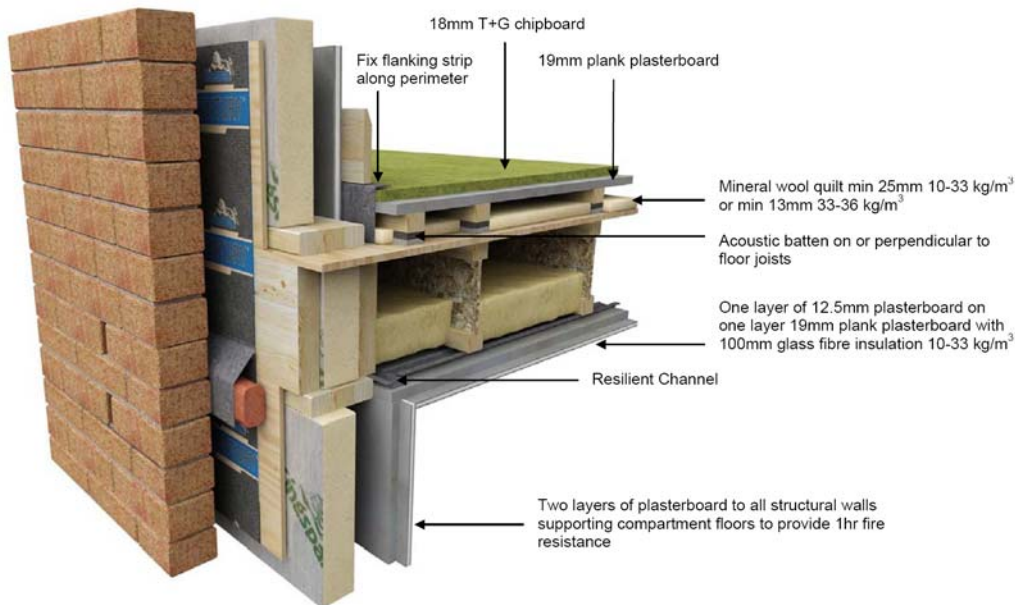


- **Structural Design Standards**

- BS 5628
- IS 444
- Eurocode 5

- **Building Regulations Requirements & Solutions**

- Fire
- Acoustics



- **Industry Regulation**

- Trade Associations
- Government Bodies
- National Guarantee Schemes

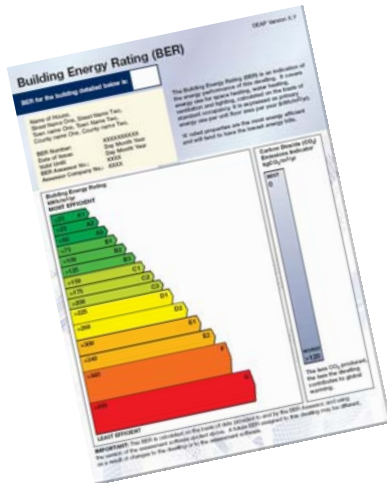
- **Trends in Domestic Design**



Image 2: Trends in Domestic Design

## • Future Challenges

- Building Energy Rating Certificates
- Code for Sustainable Homes
- Integrated Design
- Closed Panel Assemblies



## • Case Study

- Kingspan Lighthouse

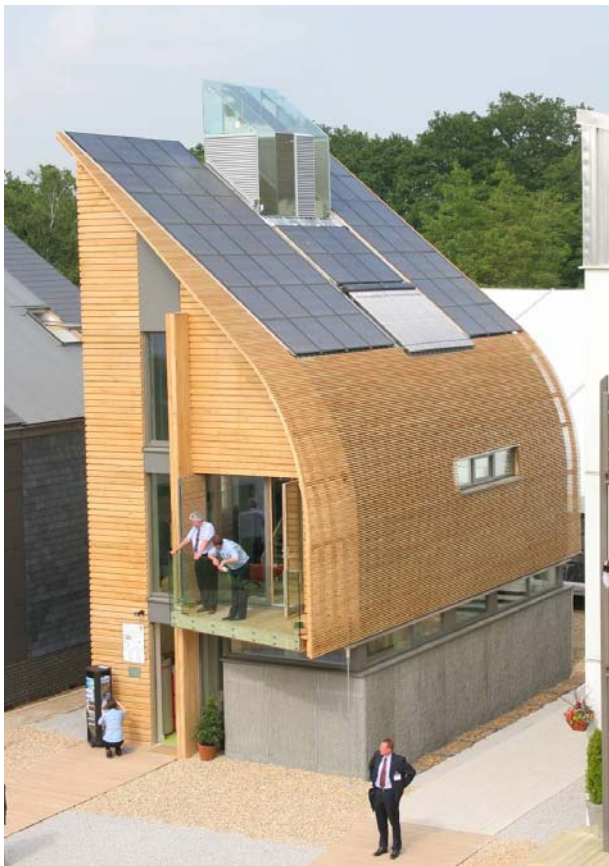


Image 3: Kingspan Lighthouse