

An architect's view of wooden buildings erected in the last few years

Realisierte Holzbauobjekte der letzten Jahre aus architektonischer Sicht

Les constructions en bois réalisées ces dernières années d'un point du vue architectural

Progetti in legno realizzati negli ultimi anni da un punto di vista architettonico

Magnus Silfverhielm
Prof.
AIX arkitekter AB
Stockholm, Sweden



An architect's view of wooden buildings erected in the last few years

I will show pictures on architecture performed in timber construction in Sweden.

It will be a house of design in Hellefors

It will be a large spanning house for horse riding at Flyinge in south Sweden.

It will be the largest parking garage house completely in wood in Skellefteå in north Sweden

It will be volume constructed massive wood houses in five stories in Skellefteå in north Sweden.

All these examples are drawn by the office of AIX architects.

But I will also give the audience a personal poetic introduction on my thoughts about large timber constructions, with the background of ways towards sustainable development, democracy, humancentered design and sensitivity.

I will also emphasize on industrialised manufacture in the development of a sustainable process as an alternative to steel and concrete.

I will also stress the costly ways the building industries now are performing.

I will take the chance to forecast a future for timber construction in the suburbs from the 60:s to make infill and urbanisation in the masses of houses we already have.

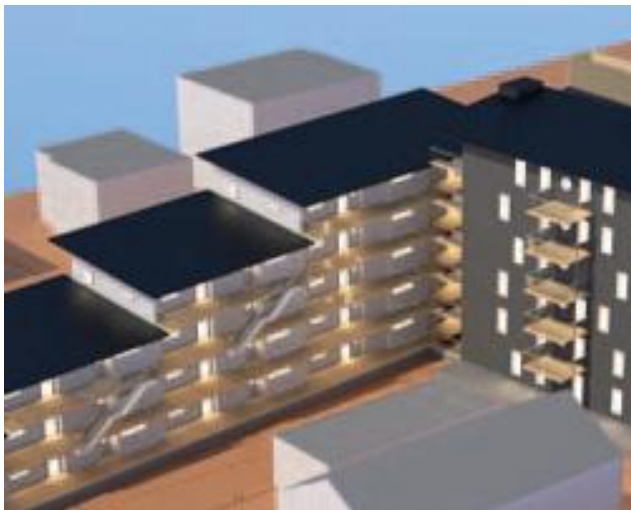


Abbildung 1: Constructed massive wood houses in five stories in Skellefteå



Abbildung 2: Sweden's first multi-storey car park Skellefteå



Abbildung 3: House of design in Hellefors



Abbildung 4: House of design in Hellefors



Abbildung 5: House for horse riding at Flyinge