

# **Publics projects: wooden challenges for wellness and happiness of the users**

Véronique Klimine  
r2k architecte  
Grenoble, France





# Publics projects: wooden challenges for wellness and happiness of the users

## R2k – Wooden public buildings: Create places for people

Pôle culturel et sportif à Alby sur Chéran – Haute Savoie

Pôle multi accueil enfance à Tencin – Isère

Pôle enfance et ludothèque à Saint Egreve – Isère



### For Tencin's project:

Prix départemental construction bois en Isère

Prix des étudiants de l'école d'architecture de Grenoble ENSAG

Prix régional Rhône Alpes Auvergne 2018

### For Alby sur Chéran's project:

Projet lauréat Prix national de la construction Bois 2018

Prix régional Rhône Alpes Auvergne 2018

For us, the principal question in every project is to find the way, the idea to create a place, for people. This is the speciality of the position of architect.

What the different sites offered to us in those projects?

How we took those specificities of places as departure for our woodworks, to catch and preserve the site qualities, even inside the buildings, to show all these wonderful things by the buildings.

**In the kindergarten and ludotheque of Saint Egreve**, we are in the grenoble metropole in the edge of a big park reserved for public uses. In east we have an impressive vertical mountain, and in south the new line of tramway with cycling and pedestrian ways, irrigating the area. In north the market place.

We decided there, to create a free form able to include in the same time building functionalities and private garden.

We were cutting in that elliptic volume: terraces, garden and entrance patio.

Sometimes the elliptic skin is made by wooden walls, sometimes it is a light steel net around outdoor space. The frontier is very light to the scenery of the park, but also the net is giving some secure protection to intrusion.

The patio is a first step to disconnect with the public market place, open to the sky, and it is giving time to people to meet informally with their very young children. Here, we enter through a symbolic passage, a large curve gate. The courtyard is also serving facilities, like kitchen and services.

The roof is a platform made of CLT, able to be used in larger rooms =.

The flexibility of the different configurations is made with different sliding doors, filters, rolling doors.

**In the kindergarten of Tencin,** our plot is in the neighbourhood of a castle in a park closed by a wall in stone, and in the middle of the Gresivaudan Valley, dominated by different massifs of mountains. Here, we are the only public building in a new housing area, without so much architectural qualities.

To give happiness and rhythm to the babies life we offered a project discussing with landscape: the rhythm of their life is made of awakening and resting times. So we were articulating the place,

- to the social time, a village place, open to terraces, between two houses, where trees are planted.
- to rest some dormitories separated, like different homes, where a balcony can offer to them a rest in the shadow, outside
- a garden with a hut,
- a place behind the building, using the slope where to play at their scale.
- For that we bend a CLT Plateform taking support from internal walls or posts in trees.

**In the cultural and sport hall in Alby** our plot is a free field surrounded by tremendous mountains. The place was chosen 20 years ago to build a high school, because the place was in the middle of the rural territory of different villages.

The place has a wonderful view and the project underlines that feeling to be on the right point to face A panorama, in the perfect axe. Here we could feel "l'esprit du lieu" when we visited first time.

To answer to the place, the public entrance is soft, with a volume in steps, to deny the high of the building, also the music school in the middle is suspending over the view to surline the huge landscape. The natural light is coming from anywhere, from light dwells in roof, in steps, trough patio, between the free rhythm of the vertical structural posts.

The acoustic results of many complexes situations, in order to realise different connexes music rooms in a light building.

To offer the ambiance we used different ways, either we kept rough expression of materials, visible concrete or visible carpentry, or either in a wide choice of different skins for acoustic, like ondulated wood, wood panels, textiles forms, and decorative steel panels. We could hide heating and ventilation systems inside.

The underground is built in rough concrete, the concrete floors are polished with colored glass inside, and the walls are in simple concrete.

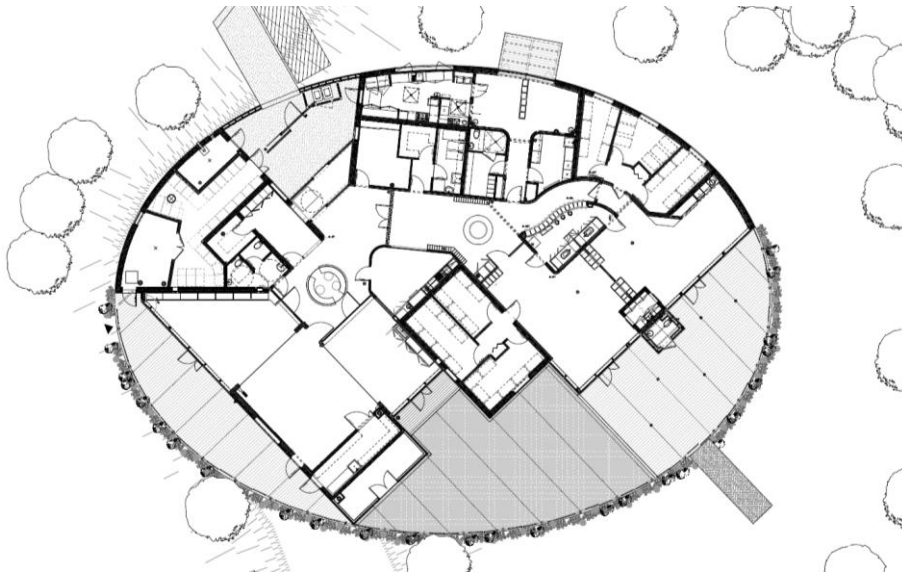
As a link symbolic between ground and sky, a stair as a dynamic spiral is giving lightness to wood blocks.

Pop Colors are taken from nature, like flowers of filed in spring, or autumn colors.

The structure is in a sismic area zone 4, demanded a strong calculation compare to the volumetry.

Straw is making the main insulation in prefabricated panels.

# 1. Kindergarten and ludotheque of Saint Egreve



## 1.1. Team

r2k architect  
 concrete structure: CTG  
 Wooden structure: GAUJARD  
 Economist: PE2C  
 Acoustics: AcoustB  
 High environmental quality: CONOPEE

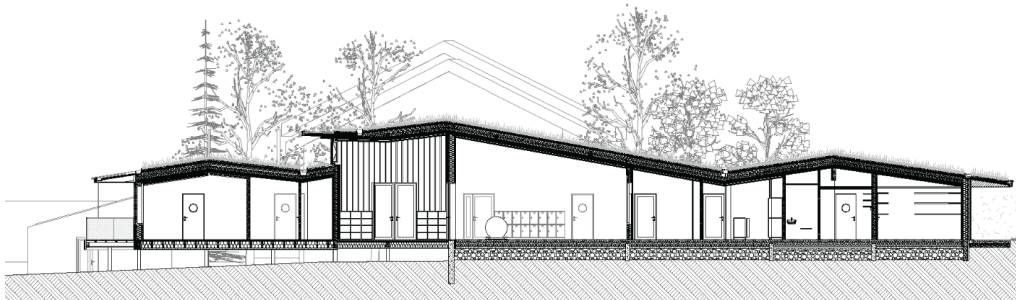
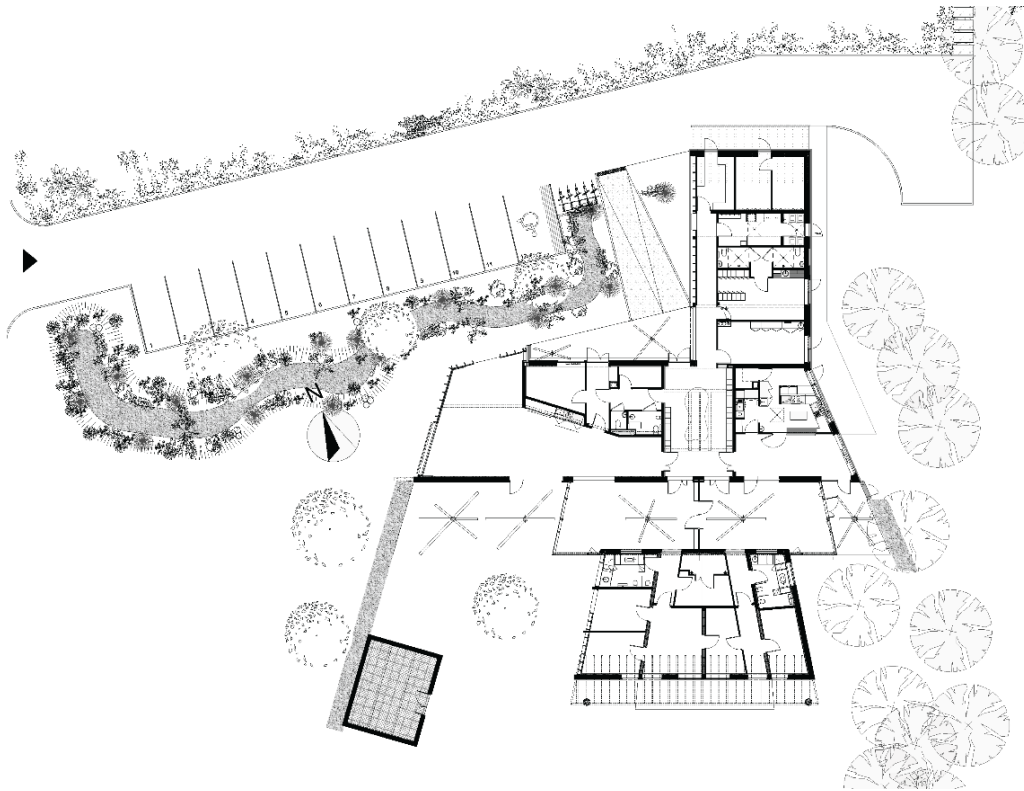
Wooden frame work: SDCC  
 Interior carpentry: Dauphiné menuiserie  
 Exterior carpentry: SDCC

## 1.2. Datas

740m<sup>2</sup> / 1 690 000€ HT



## 2. Kindergarten of Tencin





## 2.1. Equipe

architect: r2k

Olavi Koponen et Véronique Klimine architectes

BE structure bois: Arborescence

BE structures béton: CEBEA

BE fluides: L'Ingenierie Climatique

économiste: CCG

BE acoustique: ACOUSTB

VRD: SERRA

Charpente: B3D

Menuiserie: Méandre

Menuiseries ext: GB Bois

## 2.2. Datas

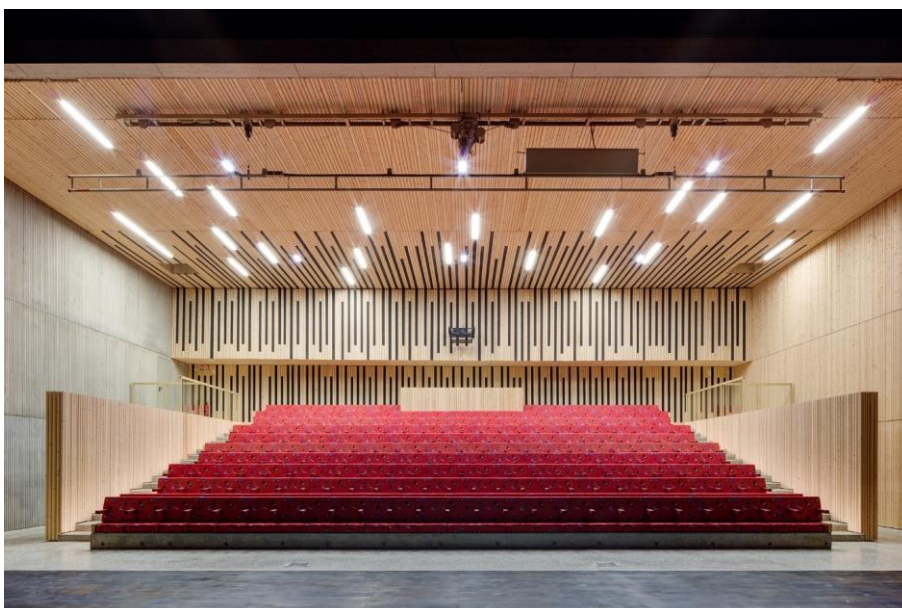
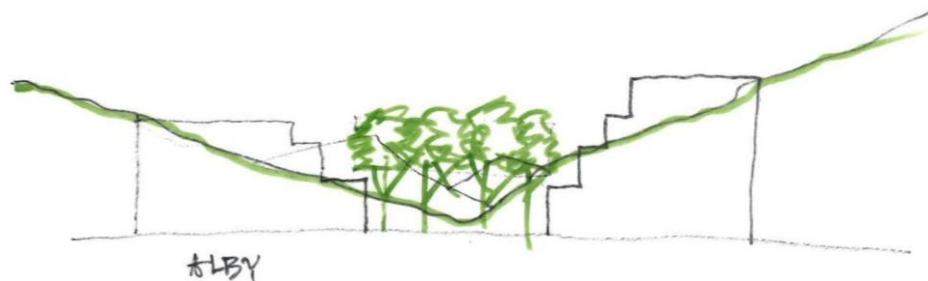
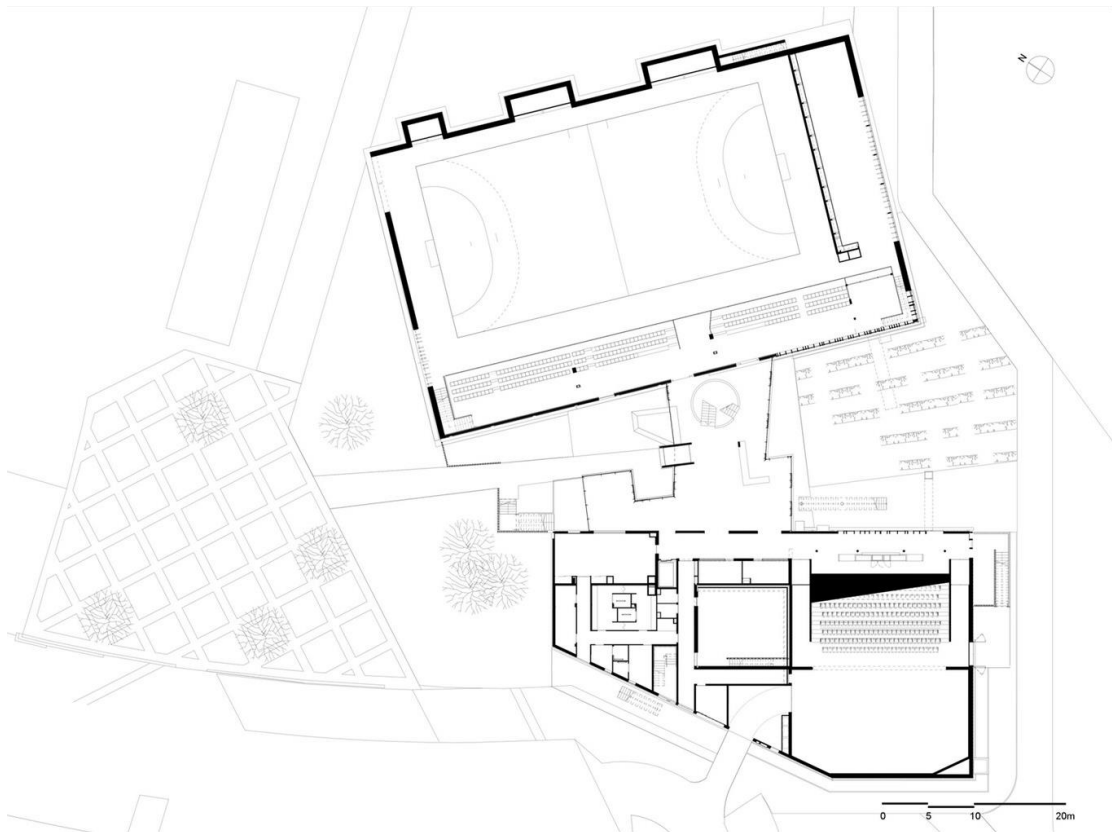
733 m<sup>2</sup>

1 462 000 € HT | cout VRD + BAT + MOB + CUISINE

Regional Prize for Wooden Construction – France région Auvergne Rhône Alpes – 2018



### 3. Cultural and sport hall in Alby –Haute Savoie







### 3.1. Team

r2k architect

Ingeneer concrete structure: Acquadro Favier

Ingeneer wooden structure: Arborescence

Economist: Bureau Michel Forgue

Acoustics: AcoustTB

Ingeneer in fluids: Nicolas Ingénierie

High environmental quality: INDIGGO

Wooden frame work: RUBNER

Interior carpentry: Roux Frères

Exterior carpentry: Menuiserie Blanc

### 3.2. Datas

4 398 m<sup>2</sup> / 9 960 000€ HT

National Prize for Wooden Construction in France 2018

